



02-047

ULTIMATE PLUS LIGHT KIT

WILL FIT E-Z-GO® RXV® (2008-15)

INSTALLATION INSTRUCTIONS

INCLUDED:

Front and Rear lights
Wiring harness
Rocker switch
Turn Signal
Electric Brake Switch
Gas Brake Switch
Horn
USB port
Converter
Column Cover

TOOLS NEEDED:

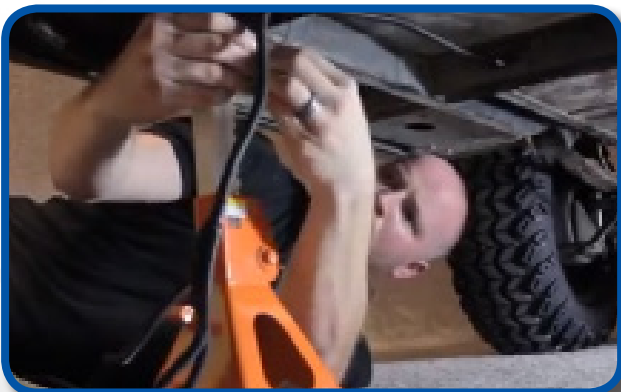
Phillips Head Screw Driver
Cutting Tool
Sandpaper
Power Drill
15/32 Drill Bit



Madjax recommends professional installation. If you choose to not have this product installed by a professional, we highly recommend that you exercise caution, care, and patience when installing this product as it involves drilling holes into your cart's body. Make sure the run/tow switch is in tow or disconnect the battery if it does not have one.

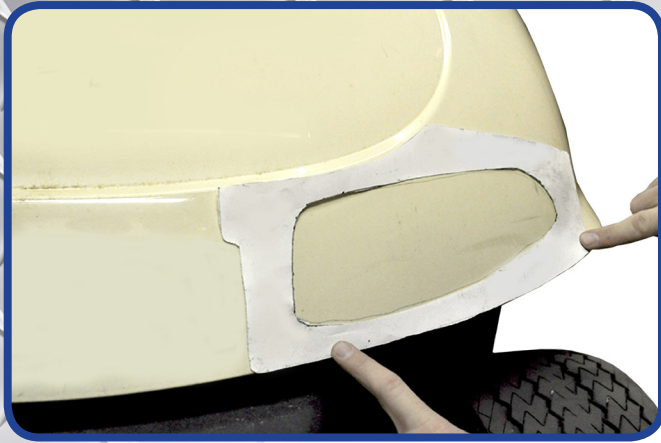
1

Switch key to OFF position. Place TOW/RUN switch to TOW. It is not required to remove the batteries but you do need to disconnect the main negative.



Lift the cart and place jack stands to support. Feed the headlight portion of the harness down through the front of the battery compartment. Route the wiring harness through the holes under the frame. Run long tail light wire under the seat and over the rear tire well on the passenger's side. Run short tail light wire under the seat and over the rear tire well on the driver's side. Loosely secure with wire ties until all lights have been installed.

Red plugs should be aligned to passenger side, white plugs for driver's side.



***For carts without a pre-cut hole:**

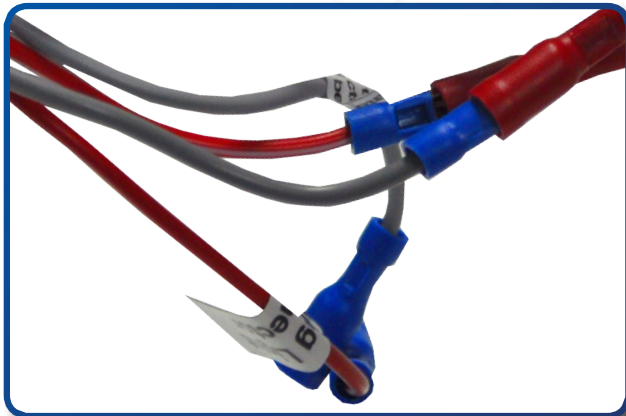
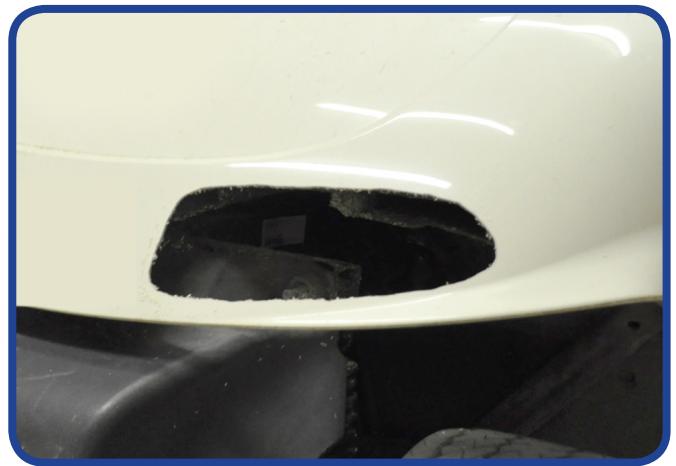
Align headlight template to the body contour as shown. Be sure to use alignment references for proper placement. Use a marking pen to trace the inside line.

Next drill a pilot hole so you will have a starting point and then begin cutting. Be sure to drill and make cuts to the inside of the line.

*Use sandpaper to smooth edge.

*Flip template over and repeat process on other side.

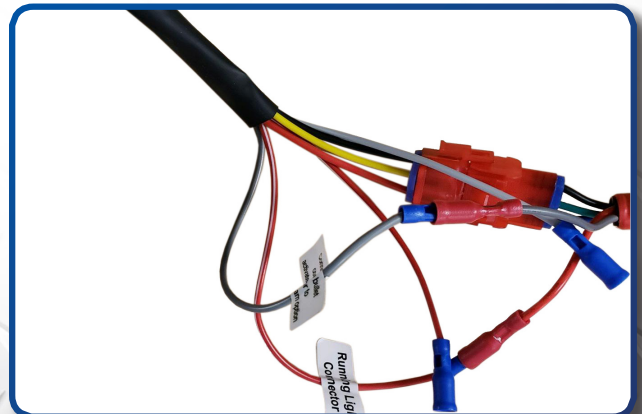
***For carts with factory lights:**
Remove factory headlight from the cowl.
Disconnect factory headlight wiring.



At the headlight, unplug the connectors in the Grey and Red/White wires.

Plug the Grey and Red/White wires from the harness into the corresponding connectors on the headlight.

Plug in 3 pin connector for lights.





Mount headlight through the cutout. Push top half in first as shown.

*Repeat process on opposite side.

***For carts without a pre-cut hole:**

Align Tail Light template to the body contour as shown. Be sure to use alignment references for proper placement. Use a marking pen to trace the inside line.

Next drill a pilot hole so you will have a starting point and then begin cutting. Be sure to drill and make cuts to the inside of the line.

*Use sandpaper to smooth edge.

*Flip template over and repeat process on other side.



***For carts with factory lights:**

Remove factory tail light hardware. Retain hardware.

Disconnect factory tail light wiring harness from tail light.

Feed the tail light harness through the back of the cart. Attach rear tail light wire harness as shown. Secure wire with ties.

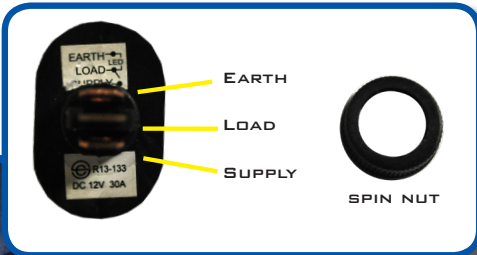




Place tail light into the rear of the vehicle. Insert four screws into Tail light using supplied hardware.

*Repeat process on opposite side

Unscrew torx-head screws and remove dashboard. Retain hardware. *Do not remove completely.



Using a 15/32" drill bit, find a desired location on your golf cart dashboard to mount your rocker switch for hazard lights. Ensure your location is free of obstacles and will not affect dash reattachment.

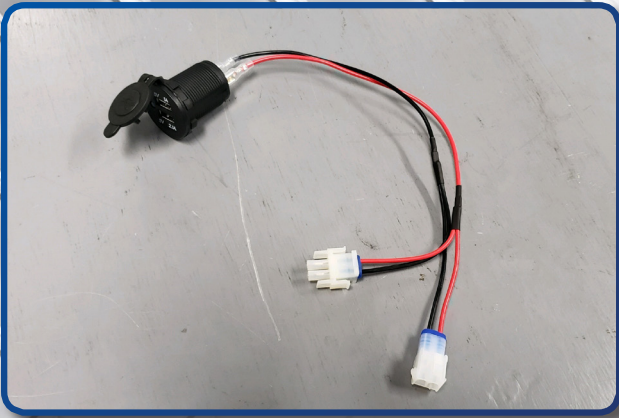


For high/low beam functionality, connect the purple wire from the turn signal to the blue wire in the harness.



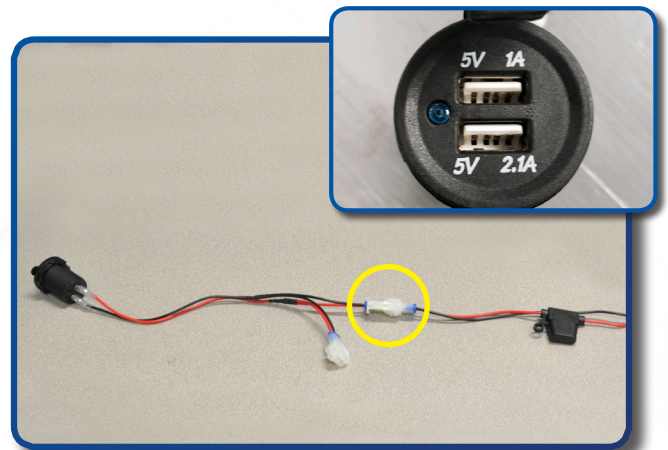
15

Using a 1 1/8" paddle bit, find a desired location on your golf cart dashboard to mount your USB charger. Ensure your location is free of obstacles and will not affect dash reattachment.



Using the supplied hardware mount the charger in the dash.

Plug the red and black 12 volt accessory connection from the light kit harness to the spade terminals on the back of the charger (red to positive and black to negative).

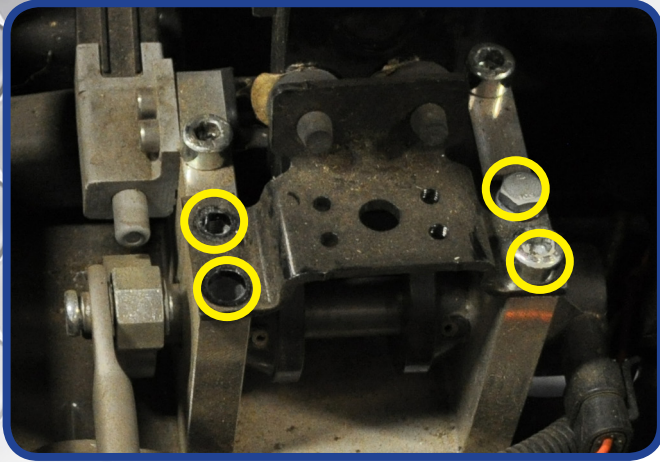


17

Secure remaining harness under cowl using provided ties.



**NOTE: If installing on an electric car, see Steps 19 & 20.
If installing on a gas car, skip forward to Step 21.**



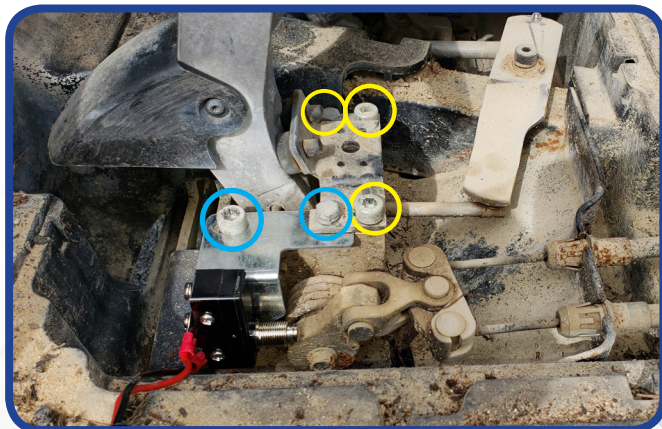
Loosen all 4 bolts holding the brake pedal stop bracket to the brake assembly.

Remove the 2 driver's side bolts (you may have to press pedal to release pressure).

With the wires facing the rear of the cart, slide the brake switch bracket between the pedal stop bracket and the pedal assembly until the mounting holes align. Do not tighten bolts because you will need to adjust the bracket's position.

Adjust the position of the switch bracket until you can hear the switch click as you press the brake pedal. There should only be a small amount of travel before the switch clicks. Tighten the 4 bolts holding the brake pedal stop bracket.

Plug the 2 bullet connectors from the brake switch into the corresponding bullet connectors on the light kit harness. Route the wiring away from the brake pedal assembly and brake cables. Secure all wiring so that it away from moving parts.



Using a 10mm socket and a 6mm Allen wrench, remove the two bolts circled in blue and loosen the three bolts circled in yellow. Slide the brake switch bracket between the pedal stop and the pedal group bracket. Reinstall the two bolts circled in blue. Adjust the switch so it is actuated after the pedal begins to move. Tighten all bolts.

Plug the 2 bullet connectors from the brake switch into the corresponding bullet connectors on the light kit harness. Secure all wiring so that it is away from moving parts.

21

Mount indicator assembly using clamps provided and tighten. Run indicator harness along steering column and insert harness through dash.



22

Attach turn signal back cover to turn signal assembly.

Attach column cover to steering column, secure harness in column cover void.

Plug in the 12 pin connector.

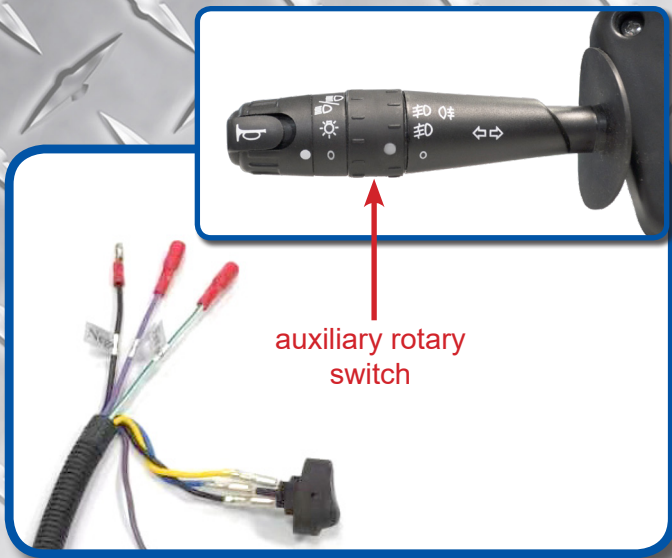
Reinstall dashboard using retained hardware.



23

Attach horn to purple and black female spade connectors and secure horn to metal framework under front cowl with supplied hardware.



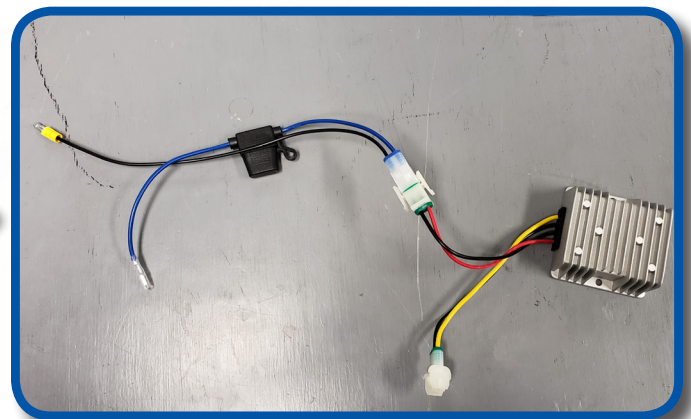


The turn signal handle has a secondary, 2-position rotary switch for auxiliary 12 volt lighting. There is one common negative wire and two positive wires to run two different sets of auxillary lighting. Additional wiring and lighting not included.

The voltage converter included must be used on 36 volt & 48 volt electric carts. Connect the red wire with the fuse to the positive terminal of the battery pack. Connect the black wire to the negative terminal of the battery pack.

Mount the converter to a flat surface under the seat. (Metal area is preferred). Plug the connector with the yellow and black wire into the light kit harness. Reconnect battery and place run/tow switch in run.

*Converter not needed for gas carts. For gas carts, connect the red wire to the positive terminal, and the black wire to the negative terminal.



INSTALLATION COMPLETE

E-Z-GO®, TXT®, RXV® and S4® are registered trademarks of Textron Innovations, Inc. Club Car®, Precedent®, DS®, Onward® and Tempo® are registered trademarks of Ingersoll Rand, Inc. Yamaha®, Yamaha® Drive®, Drive2®, G-14®, G-16®, G-19®, G-22® and G-29® are registered trademarks of Yamaha Golf-Car Company. Any reference to Club Car®, E-Z-GO®, or Yamaha® or their associated trademarks, word marks, and products are only for purposes of identifying golf carts with which this Madjax product is compatible. Madjax products are aftermarket parts and are not original equipment parts. Madjax is not connected to, affiliated with, sponsored by, or endorsed by either Textron Innovations, Inc., Ingersoll Rand, Inc., Yamaha Golf Cart Company, or any of their parent or subsidiary companies.