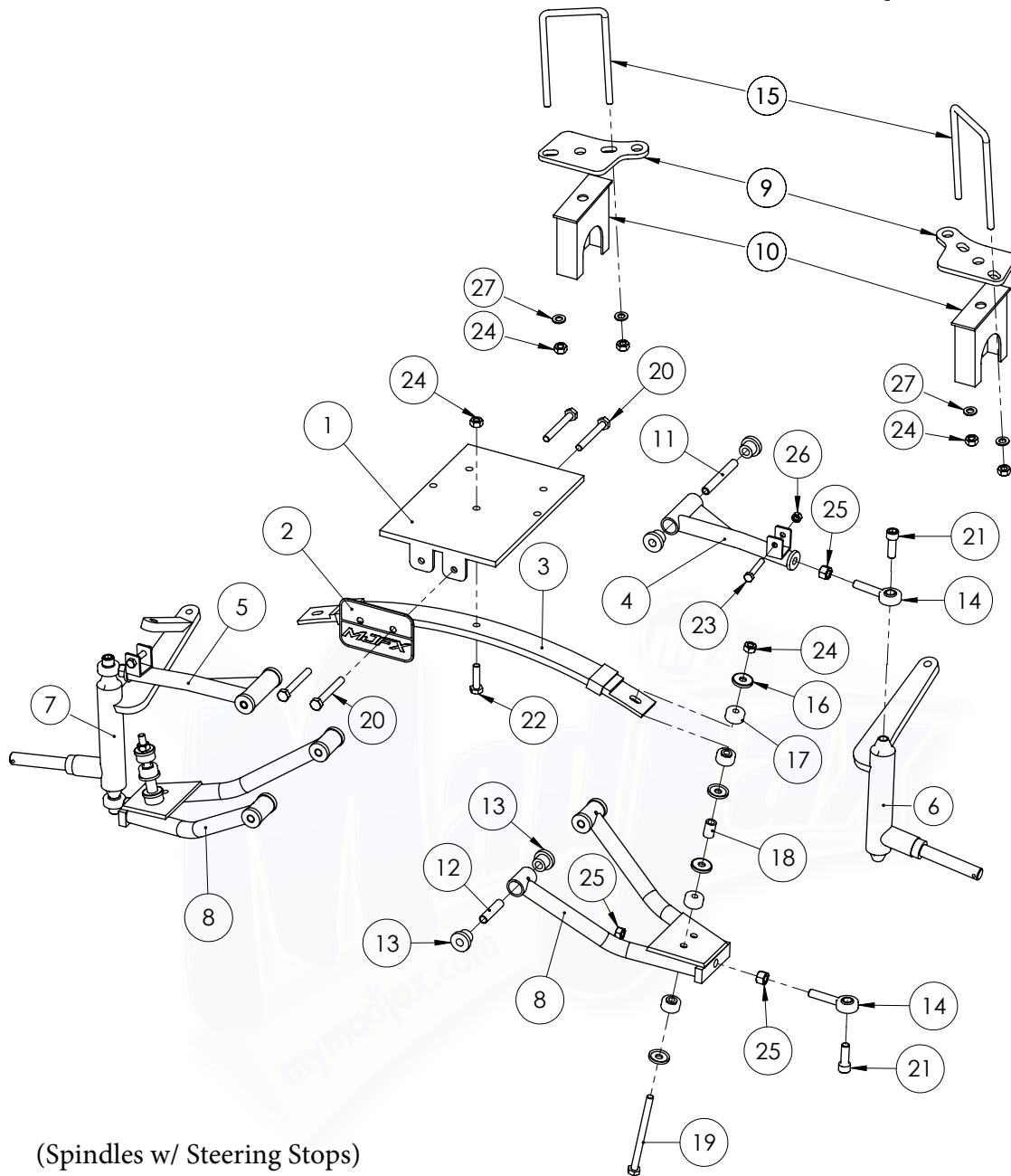


Madjax® 6 Inch A-Arm Lift Kit : Fits Club Car® DS® (Plastic Caps)



16-018 (Spindles w/ Steering Stops)

| No. | Part No. | Description | QTY |
|-----|----------|---|-----|
| 1 | W16-2-5 | Front Main Bracket DS | 1 |
| 2 | W16-2-19 | MJFX Logo Plate DS | 1 |
| 3 | W16-2-6 | Front Leaf Spring DS | 1 |
| 4 | W16-2-3 | Left Upper A-Arm DS | 1 |
| 5 | W16-2-4 | Right Upper A-Arm DS | 1 |
| 6 | W16-2-20 | Front Spindle DS 6.0 Plastic Caps - Left | 1 |
| 7 | W16-2-21 | Front Spindle DS 6.0 Plastic Caps - Right | 1 |
| 8 | W16-2-2 | Lower Control Arm DS | 2 |
| 9 | W16-1-9 | Rear Suspension Mounting Plate - Club Car | 2 |
| 10 | W16-1-5 | Rear 6-inch Lift Block - Club Car | 2 |
| 11 | W16-2-18 | 95mm Bolt Sleeve | 2 |
| 12 | W16-8-6 | 55mm Bolt Sleeve | 4 |
| 13 | W16-8-1 | Upper A-Arm/Lower Control Arm Bushing | 12 |
| 14 | W16-8-3 | Heim Joint | 4 |
| 15 | W16-8-4 | U-Bolt 106mm x 180mm | 2 |

| No. | Part No. | Description | QTY |
|-----|----------|-------------------------------------|-----|
| | W16-8-11 | Front Leaf Spring Bolt Assembly 6.0 | 2 |
| 16 | | Leaf Spring Bushing Cap | 4 |
| 17 | | Leaf Spring Bushing | 4 |
| 18 | | 25mm Bolt Sleeve | 1 |
| 19 | | M10x140 Hex Head Bolt | 1 |
| 24 | | M10 Locking Nut | 1 |
| | W16-2-1 | DS Lift Kit Hardware Pack | 1 |
| 20 | | M10x80 Head Head Bolt | 4 |
| 21 | W16-8-13 | M12x35 Hex Socket Cap Bolt | 4 |
| 22 | | M10x40 Head Head Bolt | 1 |
| 23 | | M8x50 Hex Head Bolt | 2 |
| 24 | | M10 Locking Nut | 10 |
| 25 | | M12 Nut | 6 |
| 26 | | M8 Locking Nut | 2 |
| 27 | | M10x20 Flat Washer | 4 |